

Resource Roadmap

For Children and Youth with
Special Health Care Needs (CYSHCN)

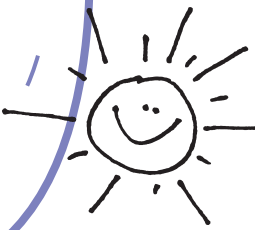


WELCOME TO WESTERN WISCONSIN

Please use this map as a friendly guide on the road to finding resources for children and youth with special health care needs from birth to 21 years old.

Birth to 3 Programs

provide early intervention services for eligible children in every Wisconsin county. *Birth to 3* professionals will work in partnership with parents to help their child with developmental delays to grow, learn and communicate. Services include evaluation and assessment, special instruction, pediatric therapy services, and family-centered service coordination. *Birth to 3* staff work with parents to develop an Individual Family Service Plan (IFSP) which is based on their priorities and goals for their child. Before children reach age three, the *Birth to 3* staff will help with transitions to early childhood special education programs or other appropriate community resources available to support young children and families.



Transition Resources

provide planning support for youth with special health care needs and their families to prepare for maximizing independence and assuring quality care as they become adults. Activities may include exploring opportunities for education and training, personal futures planning, work (both volunteer and paid), transitions to adult health care, and community living options. Resources to help families understand complex issues such as guardianship, special needs trust planning, and applying for SSI are all available through the Regional Centers. Referrals to Aging and Disability Resource Centers, Centers for Independent Living and Division of Vocational Rehabilitation (DVR) are often part of individual transition planning.



Wisconsin and Federal Health Benefits Programs

provide a variety of ways to be eligible for Medicaid programs (such as BadgerCare, Healthy Start, Supplemental Security Income (SSI), Katie Beckett, etc.) which help pay for medical care for eligible children and youth with special health care needs. Each eligibility category has different criteria: some are based on parent income and assets and others are based on the child's unique needs and the level of care required to live at home. Because of the complexity involved with learning about Medicaid, it is a good idea to save time and effort by contacting the Regional CYSHCN Centers where we can guide you in the right direction with individualized health benefits counseling.

SAVE
for future
reference



Call 1-800-400-FORU (3678)
the Western Regional CYSHCN Center
www.co.chippewa.wi.us/ccdph/cyshcn
or 1-800-642-STEP (7837)

www.mch-hotlines.org
Wisconsin First Step
for 24 hour access
to information

1-800-400-FORU

LOST???

Call for HELP!

18 Local Health Departments*

in the Western Region are our partners in providing access to local service coordination for CYSHCN families. Other Public Health services include: prenatal care coordination, local immunization clinics and home visits by public health nurses. Some local Public Health Departments provide school health nursing consultation, family planning services, home care, environmental health and the WIC nutrition program. Call your local Health Department or the Regional Center for a complete listing of local services.

*Barron, Buffalo, Burnett, Chippewa, Clark, Douglas, Dunn, Eau Claire, Jackson, La Crosse, Monroe, Pepin, Pierce, Polk, Rusk, St. Croix, Trempealeau, Washburn

Wisconsin First Step

is a statewide 24 hour information and referral telephone and website resource that provide professionally trained staff, including parents of children with special health care needs. Experienced counselors are available to talk over concerns, explore options, answer questions and identify resources to meet callers' needs. Parents and providers alike are welcome to call 1-800-642-STEP (7837). Language interpretation and Voice/TTY are available 24 hours a day/7 days a week, or log on to www.mch-hotlines.org.

The State CYSHCN Program, housed in the WI Division of Public Health, provides consultation, technical assistance and contractual oversight to the five Regional CYSHCN Centers and Wisconsin First Step. Funding for the *Resource Road Map* is provided by the Maternal and Child Health Title V Services Block Grant, Maternal and Child Health Bureau, Health Resources and Services Administration, U.S. Department of Health and Human Services and SPECIAL FRIENDS, Inc.



Childcare and Respite Resources

are located throughout the Western Region. The toll free number for the Childcare Resource and Referral agency will direct callers to the closest office for current listings of certified family childcare providers and licensed day care centers. Respite Care provides families with a qualified caregiver and a break from 24 hour care for their child with special health care needs. It can be challenging to find respite care depending on personal and local resources. The Regional CYSHCN Center will help identify possible sources of funding and qualified child care providers, according to each family's unique needs.

Western Region CYSHCN Center

is one of five Regional CYSHCN Centers in Wisconsin that are part of a statewide network that provides free and confidential information and assistance to parents of children and youth with special health care needs and their service providers. The Regional Center staff is dedicated to responding to callers' needs through individualized consultation, referral and follow-up, parent to parent support and referral to community agencies who can partner with families to provide care coordination, advocacy and emotional support.

Advocacy Resources

for all kinds of special needs and issues are readily available through the Regional CYSHCN Center and Wisconsin First Step. Assuring access to comprehensive quality health care within a *Medical Home* is a primary focus of the Regional Centers. When children and families have health care within a Medical Home, it assures that their health care will be accessible, family-centered and coordinated with appropriate community resources. Working with health insurance providers, and various Medicaid programs that will pay for needed health care can be overwhelming. Call for assistance in finding primary and specialty health care providers, health benefits counseling, toll-free advocacy agency contact information and consumer friendly websites.

Human Services Departments

can provide access to Long Term Care Programs for eligible children and adults with cognitive, physical, developmental and emotional disabilities. Most counties have waiting lists due to limited ongoing funding. Families are encouraged to contact their Human Services department for more information about potential resources to assist them, both now and in the future. Human Services departments also provide mental health and community support programs for persons with severe and chronic mental illness. Access to limited funding for alcohol, tobacco and other drug (ATOD) treatment services may be available. Many counties have "Children Come First" wrap-around programs to assist families with children with severe emotional disturbances. Call your county Human Services department or the Regional CYSHCN Center for specific referral information for each county.

Parent to Parent Services

are available by request through each Regional CYSHCN Center, where a parent with a child with special health care needs is on staff. They can assist callers directly, or facilitate a referral to another parent to parent resource. In addition, Family Voices of Wisconsin provides healthcare and community resources. Parent to Parent of Wisconsin also provides training for parents who are raising children with special health care needs and are willing to volunteer to be a "Support Parent" to others. Contact the Regional Center for upcoming parent training opportunities.