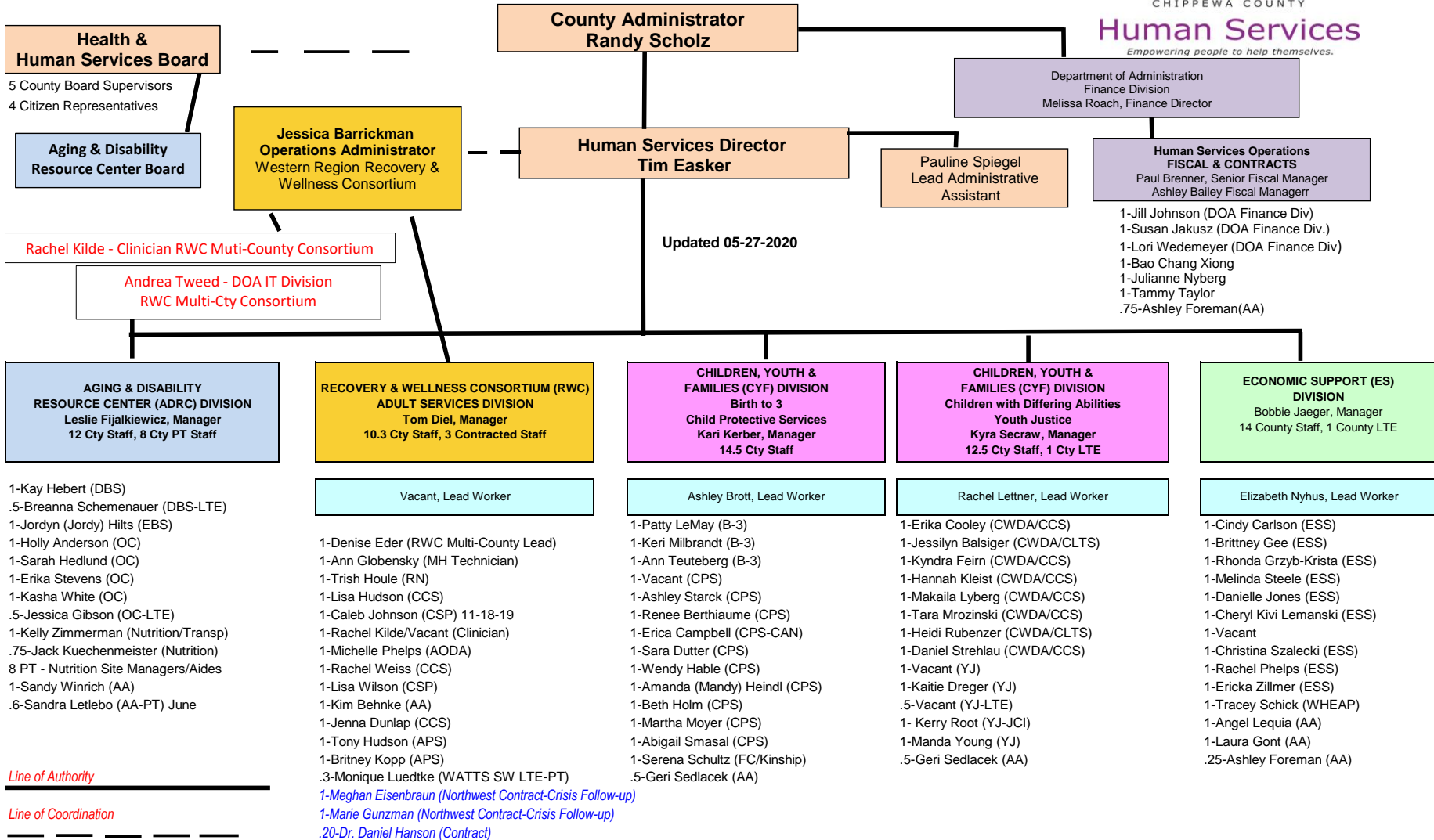


Chippewa County Department of Human Services Organizational Chart - Employees

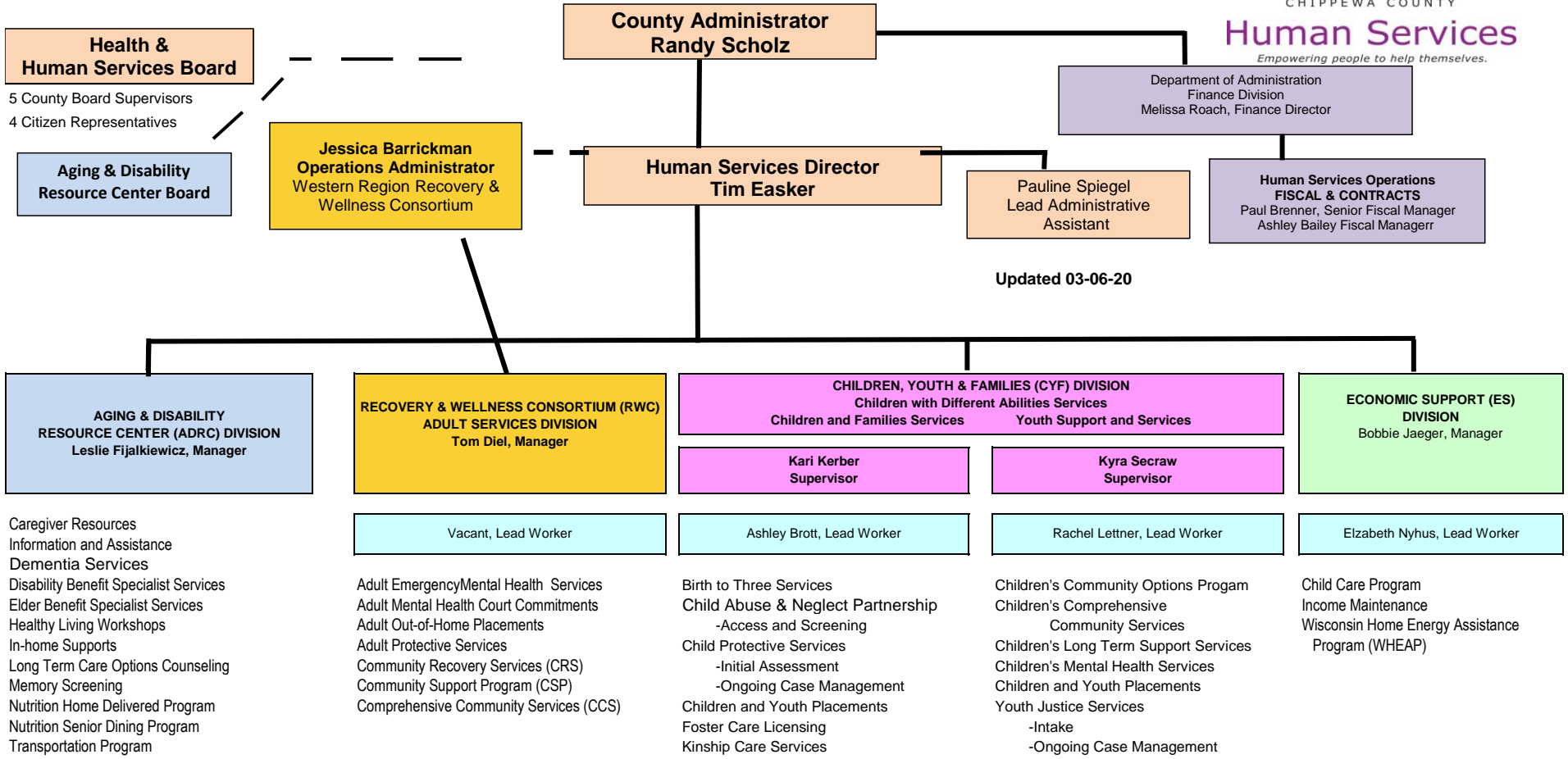


Human Services
Empowering people to help themselves.



Chippewa County Department of Human Services

Organizational Chart - Services



Updated 03-06-20

Health & Human Services Board

5 County Board Supervisors
4 Citizen Representatives

Aging & Disability Resource Center Board

**Jessica Barrickman
Operations Administrator**
Western Region Recovery & Wellness Consortium

**County Administrator
Randy Scholz**

**Human Services Director
Tim Easker**

Department of Administration
Finance Division
Melissa Roach, Finance Director

Pauline Spiegel
Lead Administrative
Assistant

**Human Services Operations
FISCAL & CONTRACTS**
Paul Brenner, Senior Fiscal Manager
Ashley Bailey Fiscal Manager

**AGING & DISABILITY
RESOURCE CENTER (ADRC) DIVISION**
Leslie Fijalkiewicz, Manager

**RECOVERY & WELLNESS CONSORTIUM (RWC)
ADULT SERVICES DIVISION**
Tom Diel, Manager

CHILDREN, YOUTH & FAMILIES (CYF) DIVISION
Children with Different Abilities Services
Children and Families Services Youth Support and Services

**Kari Kerber
Supervisor**

**Kyra Secraw
Supervisor**

**ECONOMIC SUPPORT (ES)
DIVISION**
Bobbie Jaeger, Manager

Caregiver Resources
Information and Assistance
Dementia Services
Disability Benefit Specialist Services
Elder Benefit Specialist Services
Healthy Living Workshops
In-home Supports
Long Term Care Options Counseling
Memory Screening
Nutrition Home Delivered Program
Nutrition Senior Dining Program
Transportation Program

Vacant, Lead Worker

Adult EmergencyMental Health Services
Adult Mental Health Court Commitments
Adult Out-of-Home Placements
Adult Protective Services
Community Recovery Services (CRS)
Community Support Program (CSP)
Comprehensive Community Services (CCS)

Ashley Brott, Lead Worker

Birth to Three Services
Child Abuse & Neglect Partnership
-Access and Screening
Child Protective Services
-Initial Assessment
-Ongoing Case Management
Children and Youth Placements
Foster Care Licensing
Kinship Care Services

Rachel Lettner, Lead Worker

Children's Community Options Program
Children's Comprehensive
Community Services
Children's Long Term Support Services
Children's Mental Health Services
Children and Youth Placements
Youth Justice Services
-Intake
-Ongoing Case Management

Elizabeth Nyhus, Lead Worker

Child Care Program
Income Maintenance
Wisconsin Home Energy Assistance
Program (WHEAP)