



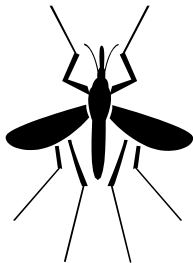
# CHIPPEWA COUNTY 2017 Waste Tire Program

## A COUNTY PROGRAM

The Waste Tire program provides an opportunity for Chippewa County residents to dispose of their discarded tires for a low fee at convenient collection sites. This program provides an outlet for waste tires and assembles large amounts of waste tires sufficient to be loaded on semi-trailers and transported to facilities where the tires are converted to tire derived fuel (TDF).

## ELIMINATE HAZARDS

It is estimated that in Wisconsin five million used tires are discarded each year. Waste tires present a health hazard and are fertile breeding grounds for mosquitoes and other insects. Large stockpiles of waste tires pose a fire hazard.



SW/TIRES/FACT2017/2-17

## CORNELL COLLECTION DATES

**Located at the Chippewa County Highway Shop at 20250 Cty Hwy K, just south of Cornell.**

*May 18*                      *1 pm - 5 pm*  
*May 20*                      *8 am - Noon*  
*September 23*            *8 am - Noon*  
*October 19*                *1 pm - 5 pm*

## LAFAYETTE COLLECTION DATES

**Located behind the Lafayette Town Hall, just south of County Hwy X, at 5765 197<sup>th</sup> Street.**

*April 13*                      *1 pm - 5 pm*  
*April 15*                      *8 am - Noon*  
*May 11*                        *1 pm - 5 pm*  
*June 15*                      *1 pm - 5 pm*  
*July 20*                        *1 pm - 5 pm*  
*August 17*                    *1 pm - 5 pm*  
*September 21*              *1 pm - 5 pm*  
*September 23*              *8 am - Noon*  
*October 19*                 *1 pm - 5 pm*

## FEE SCHEDULE

	<b>Res/Gov</b>	<b>Business</b>
Passenger (through 15")	\$ 1.50	\$ 2
with rim	\$ 3	\$ 4
Passenger (16-17")	\$ 3	\$ 4
with rim	\$ 5	\$ 8
L-15	\$ 3	\$ 4
with rim	\$ 5	\$ 8
Truck (18-19")	\$ 5	\$ 9
with rim	\$ 8	\$ 11
Truck (20-22.5")	\$ 8	\$ 11
with rim	\$ 11	\$ 14
Truck (over 22.5")	\$ 10	\$ 13
with rim	\$ 13	\$ 16
Tractor (to 28)	\$ 12	\$ 17
Tractor (over 28)	\$ 17	\$ 25
with rim	\$ 22	\$ 33
Heavy Equipment (under 500 lbs.)	\$ 17	\$ 25
Heavy Equipment (500-700 lbs.)	\$ 35	\$ 50
Bulk Loads	\$150/ton	\$200/ton

## FURTHER INFORMATION

Tire rims can be taken to a local scrap metal dealer for disposal. Where deemed necessary the County may require weight receipts (gross and tare) to determine the tonnage of waste tires brought for disposal. The County reserves the right to refuse acceptance of any waste tire for specific reasons. For more information regarding the tire collections call 726-7999.